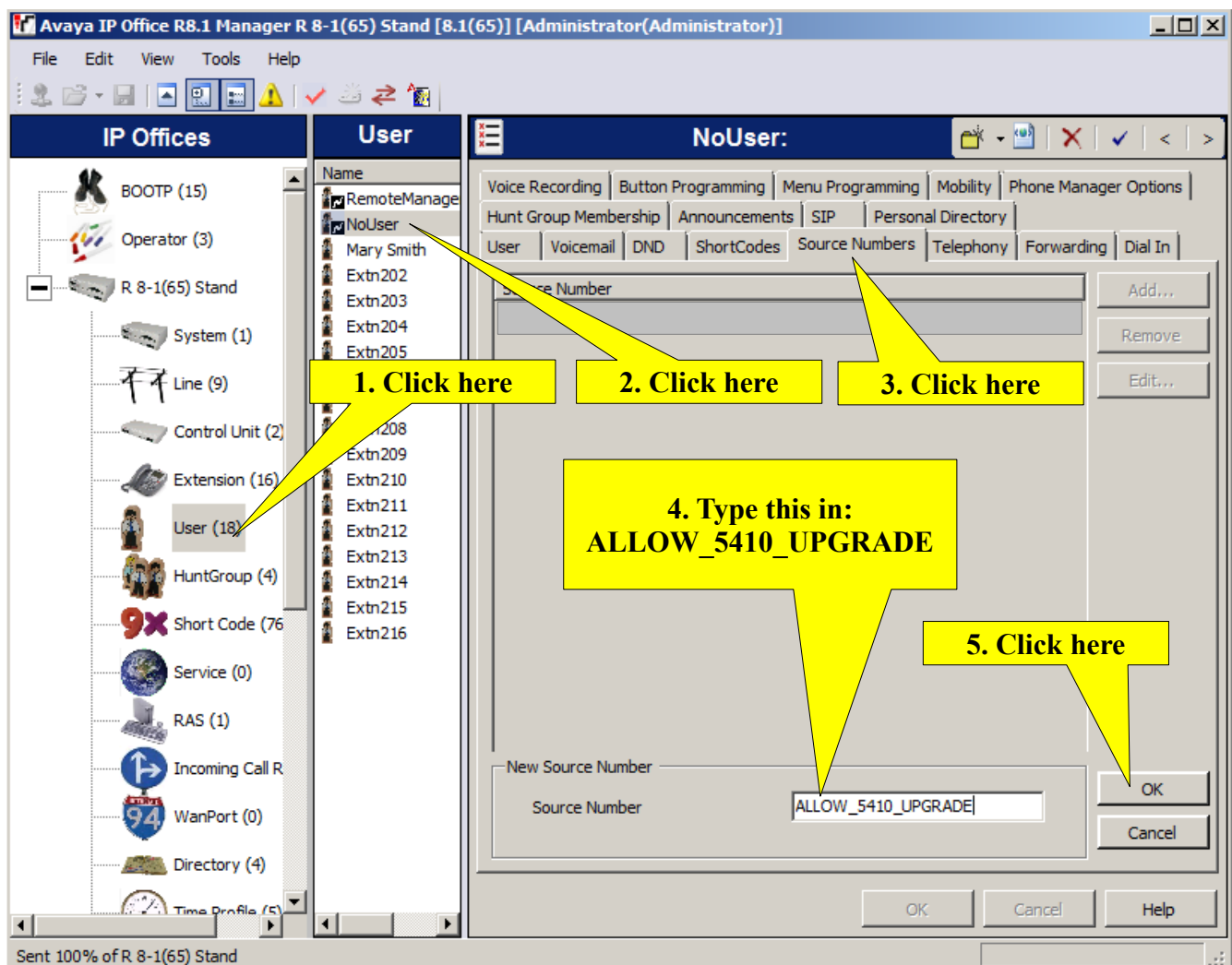


Avaya IP Office

Allow 5410 phones to work on the system

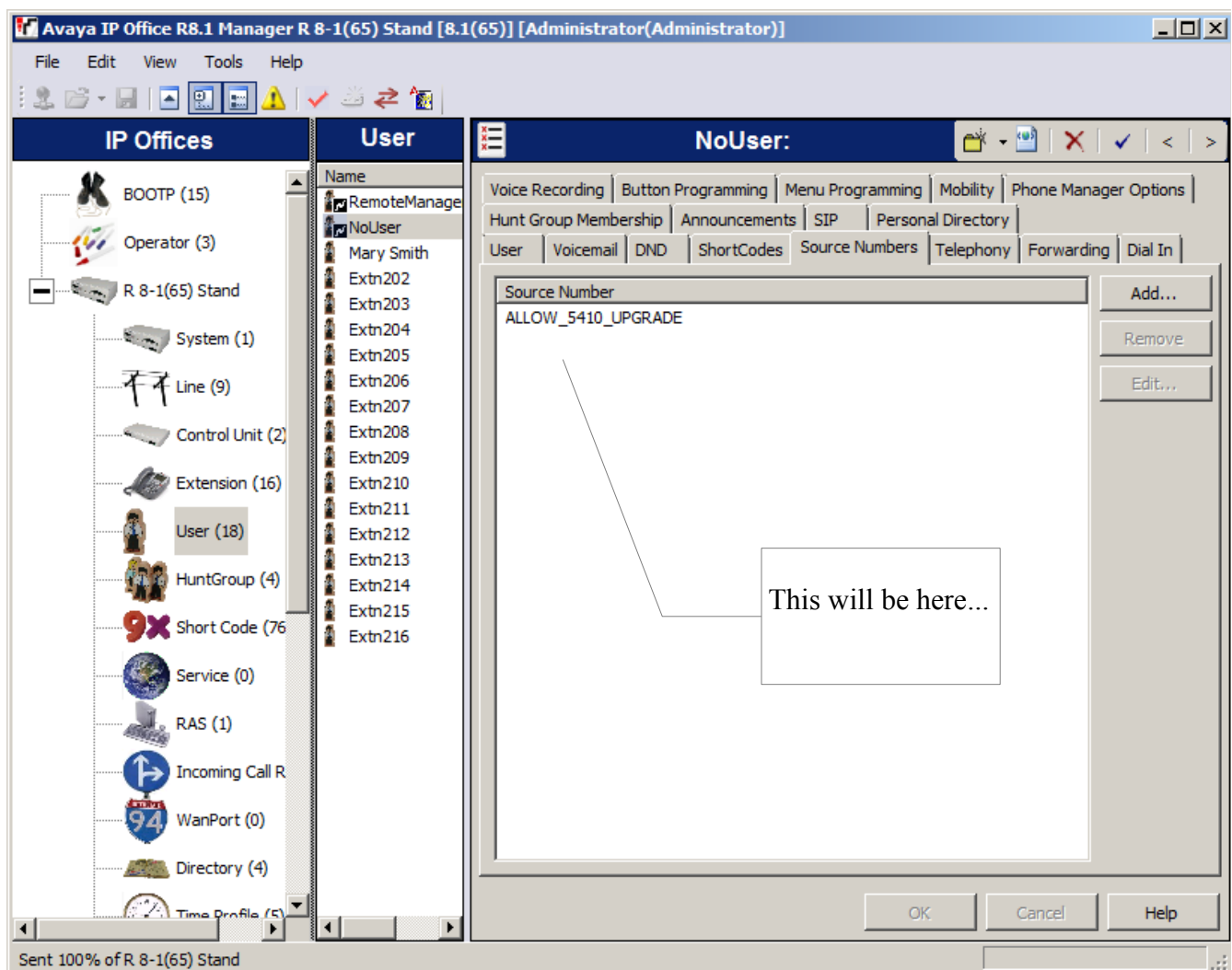
Telquest Tech Support



Click the OK button at the bottom right hand side of the screen.

Click the Blue Floppy Disc icon on the uppermost left hand side of the screen to send new data to the KSU.

When you are done, it should look like this:



Unplug and then plug in the 5410 phone to allow it to upgrade.